

ElmScan 5

Bluetooth™

Quick Start

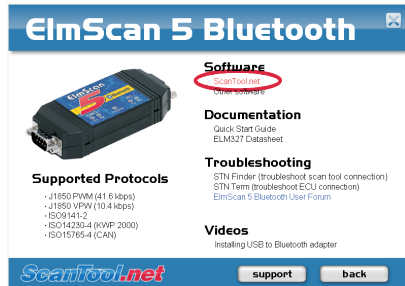
1. Install ScanTool.net software

Insert the software CD in your CD-ROM drive. The scan tool selection menu will automatically appear:



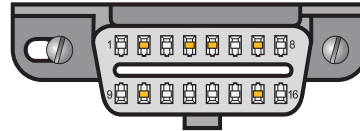
If the menu does not appear, click **Start** → **Run**, type `D:\setup.exe` (where *D* is the drive letter of your CD-ROM drive), and click **OK**.

Click on the icon labeled “ElmScan 5”, to display the software selection menu:



Click on “ScanTool.net (Windows)”, and follow the prompts to install the software.

2. Locate the diagnostic connector



The 16-pin D-shaped diagnostic link connector (DLC) should be located in the passenger or driver's compartment in the area bounded by the driver's end of the instrument panel to 300 mm (~1 ft) beyond the vehicle centerline, attached to the instrument panel and easy to access from the driver's seat. The preferred location is between the steering column and the vehicle centerline.

3. Connect scan tool to the DLC

Follow connection diagram (directly below) to connect ElmScan 5 Bluetooth to the diagnostic connector using the black OBD-II cable (steps **A** & **B**). Turn the vehicle's ignition to the Key On Engine Off position.

Watch the lights on the scan tool as you are performing step **B**. Both sets of Tx/Rx lights will be lit up in sequence from left to right. The “POWER” light should also continuously alternate between red and yellow.

4. Install USB to Bluetooth adapter

Follow the USB to Bluetooth adapter's installation guide (located on the reverse side) to connect and install the adapter.

5. Launch ScanTool.net software

To launch the software, click on **Start** → **Programs** → **OBD-II Software** → **ScanTool.net** → **ScanTool.net v1.14 for Windows**. Go to **Options**, and select the appropriate COM port number.

Technical support

Should you run into problems, technical support is just a click away:

- **Knowledgebase** - contains answers to the most commonly asked questions, general information about OBD-II, and troubleshooting information.
- **Forum** - allows you to share information and get support from other ElmScan 5 users.

These resources can be accessed from our website: www.ScanTool.net



Installing USB to Bluetooth Adapter

Introduction

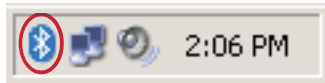
This manual explains how to install and configure the USB to Bluetooth adapter on your **Windows XP** or **Windows Vista** PC.

1. Plug in the Adapter

Plug the USB-to-Bluetooth Adapter into any available USB port. Windows will locate and install the drivers.

2. Set up the Bluetooth Connection

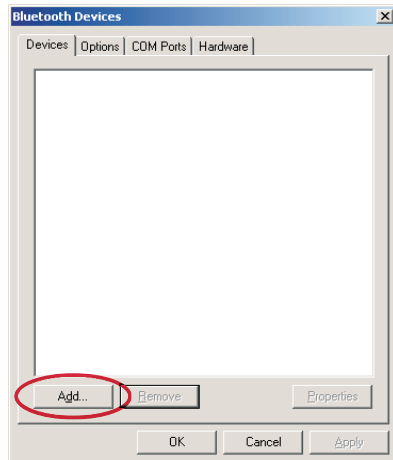
Locate the "Bluetooth Devices" icon in the system tray:



Double-click the icon.

If the icon does not appear in the system tray, remove and re-insert the USB-to-Bluetooth adapter.

The "Bluetooth Devices" window will appear:



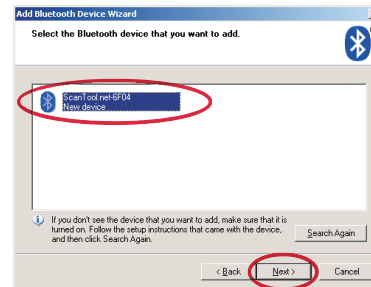
Click the "Add..." Button.

The "Add Bluetooth Device Wizard" will appear:



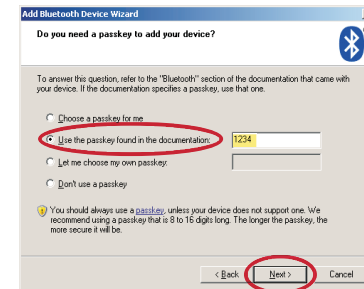
Check the "My Device is set up and ready to be found" check box, then click the "Next >" button.

The Wizard will search for and display Bluetooth devices within range:



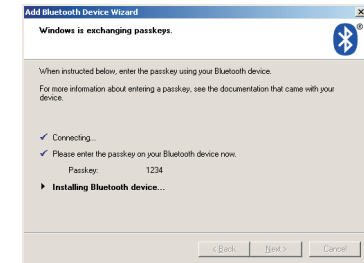
Click on the "ScanTool.net-XXXX" icon, then click the "Next >" button.

You will be asked to enter your passkey:

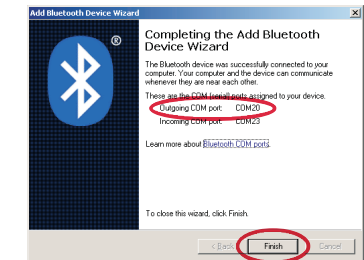


Select the "Use the passkey found in the documentation:" radio button. Enter "1234" in the text box then click "Next >"

The Wizard will connect to the scan tool, and exchange passkeys:



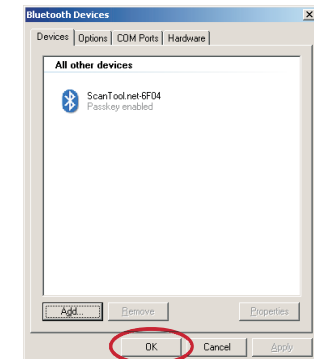
Once the passkeys are exchanged the wizard will display the COM port numbers:



Write down the number of the **outgoing** COM port, you will need it later to configure the diagnostic software.

Click "Finish".

The wizard will close and you should see "ScanTool.net-xxxx" under the "All other devices" view:



Click "OK" to complete setup process.